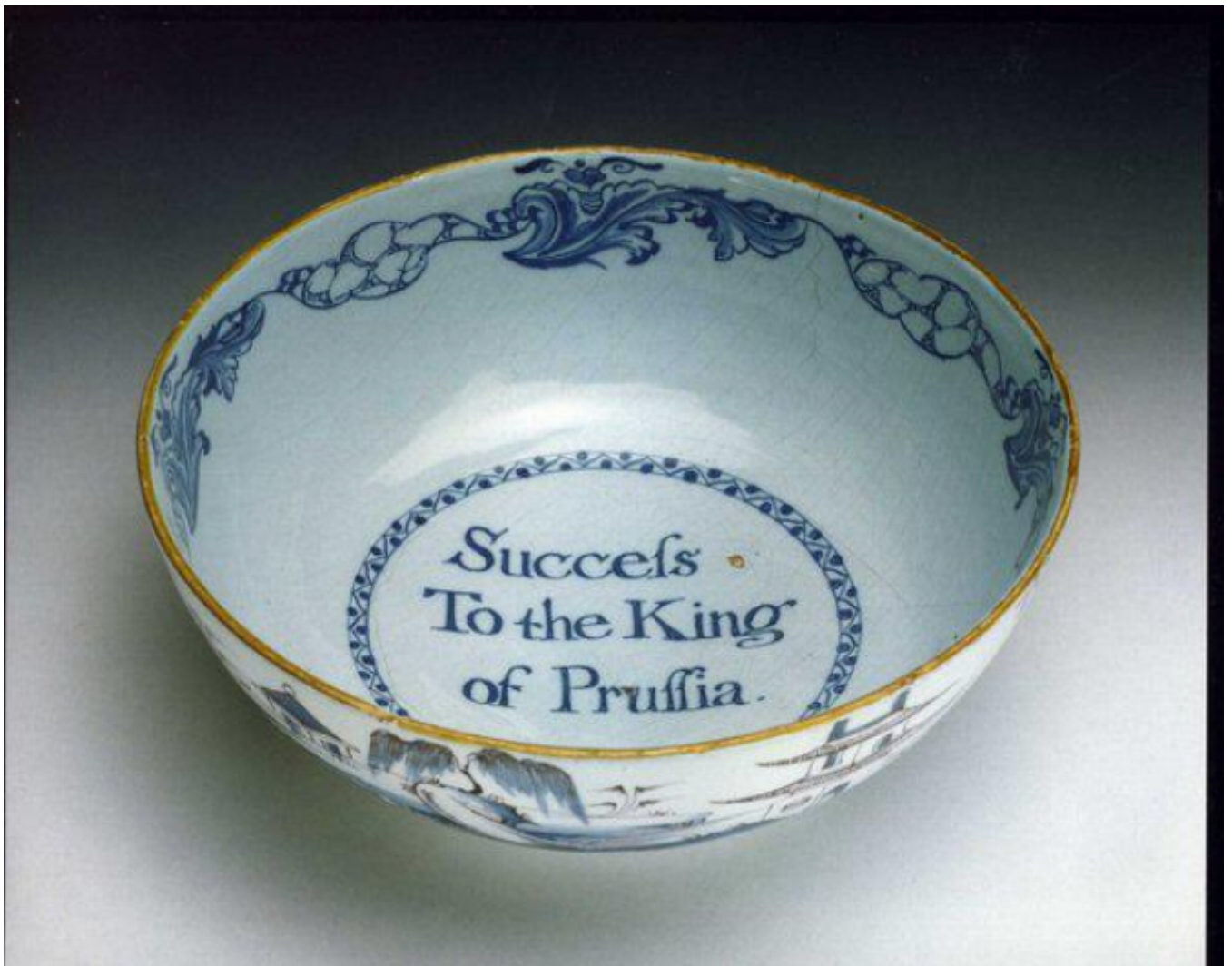


A rare, mid-18th century English delftware polychrome punch bowl with the inscription ' Success to the King of Prussia'

Sold



Description

THE RIM DECORATED WITH A GARLAND OF FOUR ANTHACUS LEAVES WITH CRACKED-ICE PATTERN RESERVES INTERPOSED.

THE OUTSIDE DECORATED WITH AN ISLAND SCENE OF A PAGODA INSIDE A GARDEN, A WILLOW TREE ON A BANK, AND A HUT IN THE DISTANCE; AND A SMALL REPEAT OF A WILLOW ON A BANK.

DECORATED IN BLUE AND MANGANESE ON A PALE BLUE GLAZE, THE EDGE YELLOW. IN ORIGINAL CONDITION. PROBABLY LONDON, CIRCA 1760.

PROBABLY MADE TO COMMEMORATE THE ALLIANCE OF ENGLAND WITH FREDERICK THE GREAT, KING OF PRUSSIA DURING THE SEVEN YEARS WAR OF 1756 TO 1763.

REFERENCE: BRITISH DELFT AT WILLIAMSBURG (AUSTEN), FIG.53.

DIAMETER : 26.00 CM./18.13 IN.

HEIGHT : 7.50 CM./ 3.13 IN

054362/246