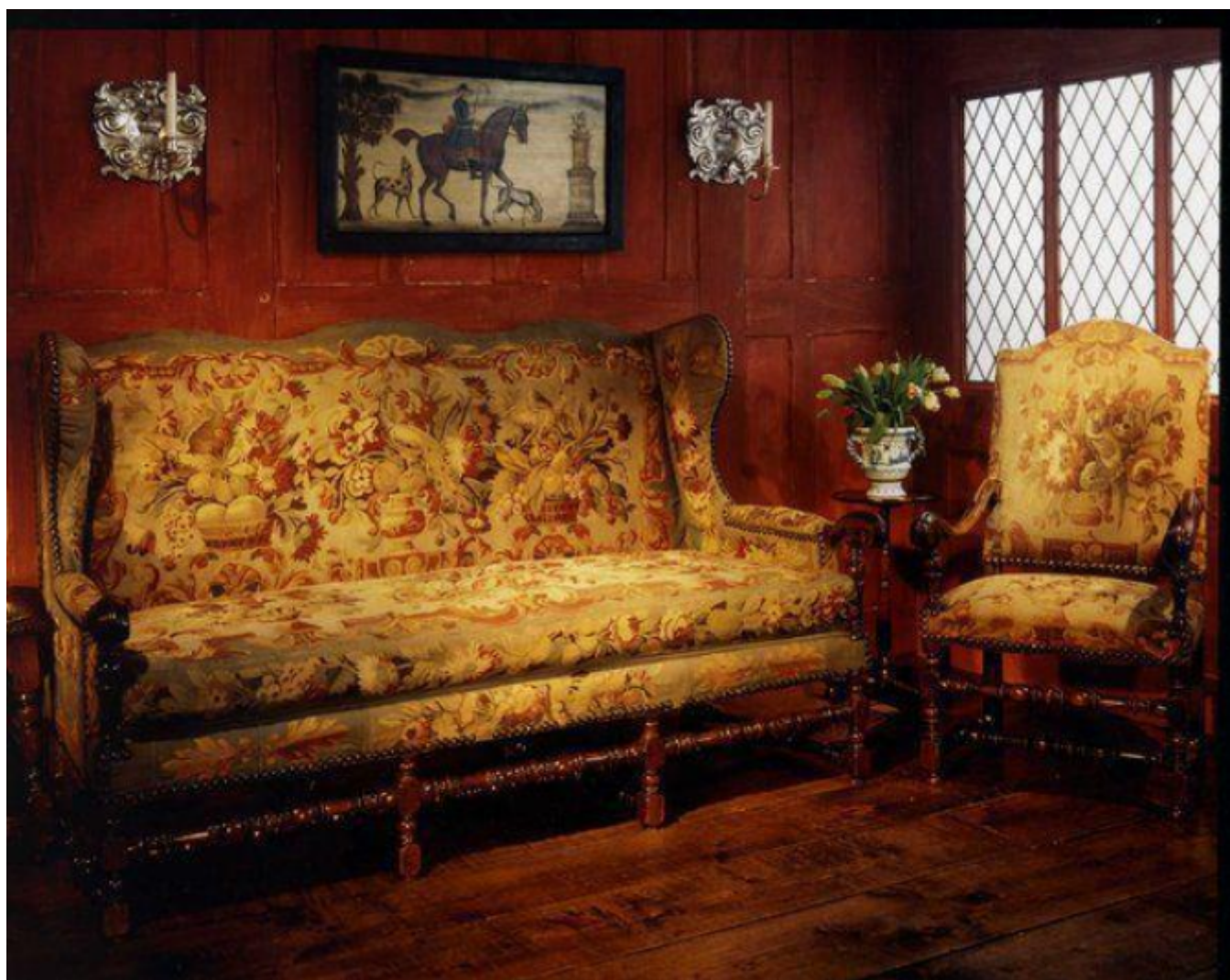


A rare upholstered suite of six late-17th century walnut and beech armchairs together with a large winged settee

Sold



## Description

The straight arched-backs and re-sprung seats re-upholstered in 19th century tapestries decorated with stylised urns, baskets of fruit and exotic birds. The shaped arms with scroll ends. Standing on square back, and turned front legs joined by turned stretchers. Some side rails replaced and restored, joints tightened-up, and tapestries restored and cleaned. Exceptional original colour and patination. French, last quarter of the 17th century.

It is extremely rare to find a large suite of 17th century furniture with each piece upholstered in tapestries from the same series. Although 19th century, the illustrations depicted in the tapestries evoke 17th century designs but with softer colour tones. There are slight variations in the turnings of the chairs. Four of the chairs have baluster turnings and the other two have bobbin turnings. They are extremely comfortable due to the deep springing, and the scrolled arms provide natural support where the sitters arms lie. The settee is large, and extremely comfortable as the arched-back is flanked by wings and scrolled arms.

The chairs and settee are in excellent condition, and the colour and patination of the walnut is quite exceptional. The repairs to some joints and siderails, are minor and only to be expected from the wear and tear of over 300 years of use. It is very difficult to attribute the regionality of the chairs with any degree of certainty.