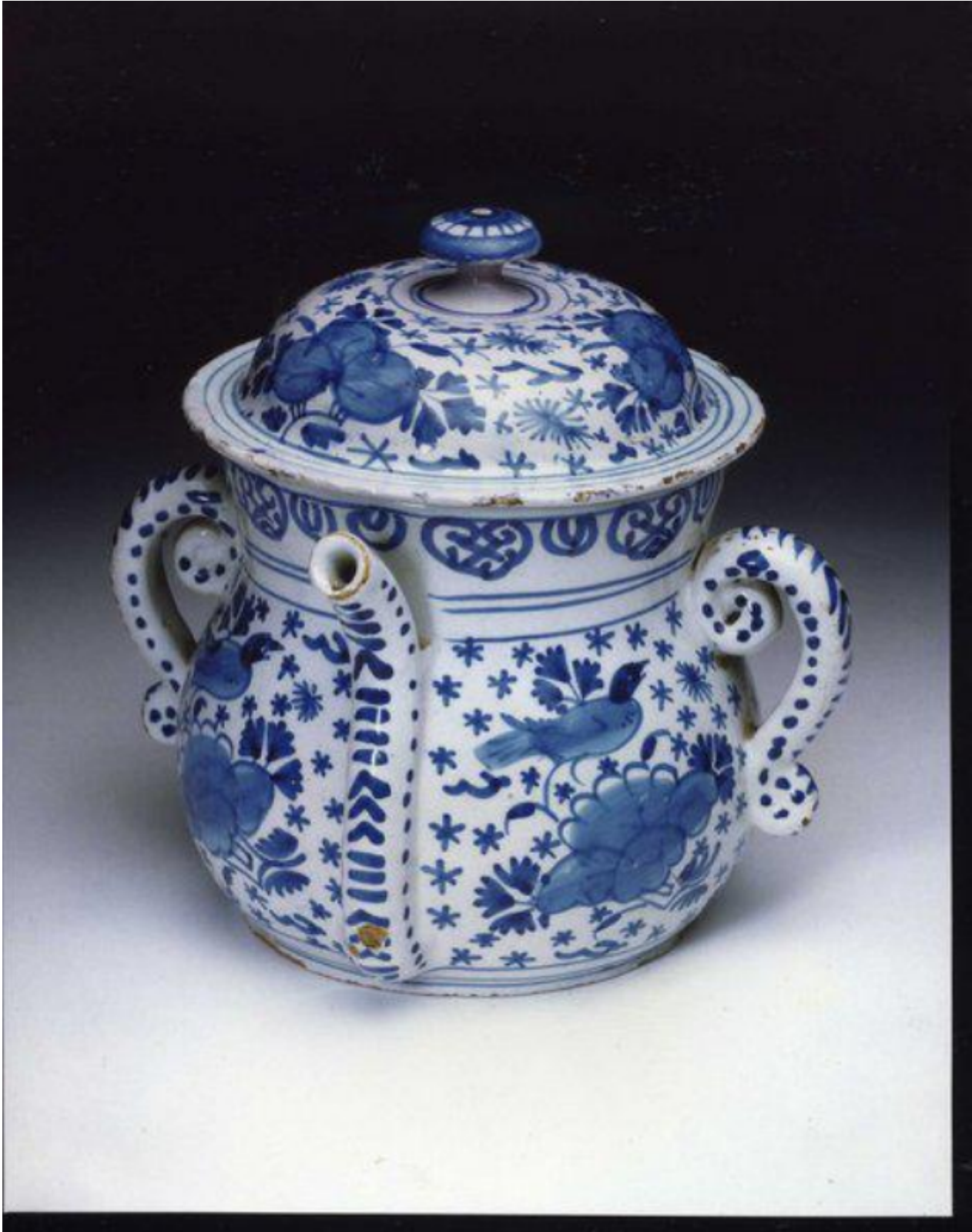


A rare, mid-18th century, English, delftware, posset pot

Sold



REF: 10544

## Description

Decorated on a ground of six-point stars, flower-head and other motifs. Simple knob on domed lid with flowers. The neck with stylised motif border. The bulbous body on a flattened base with four repeats of a bird perched on flowers. Dashed round section handles, curving in at the top and out at the tail, and clinging spout. Decorated in blue on a white glaze. Restoration to small glaze chip on lid. Probably London, first quarter of the 18th century.

Reference : British Delftware at Williamsburg (Austin) no 22  
English Delftware (Britton) no 4.2  
123202