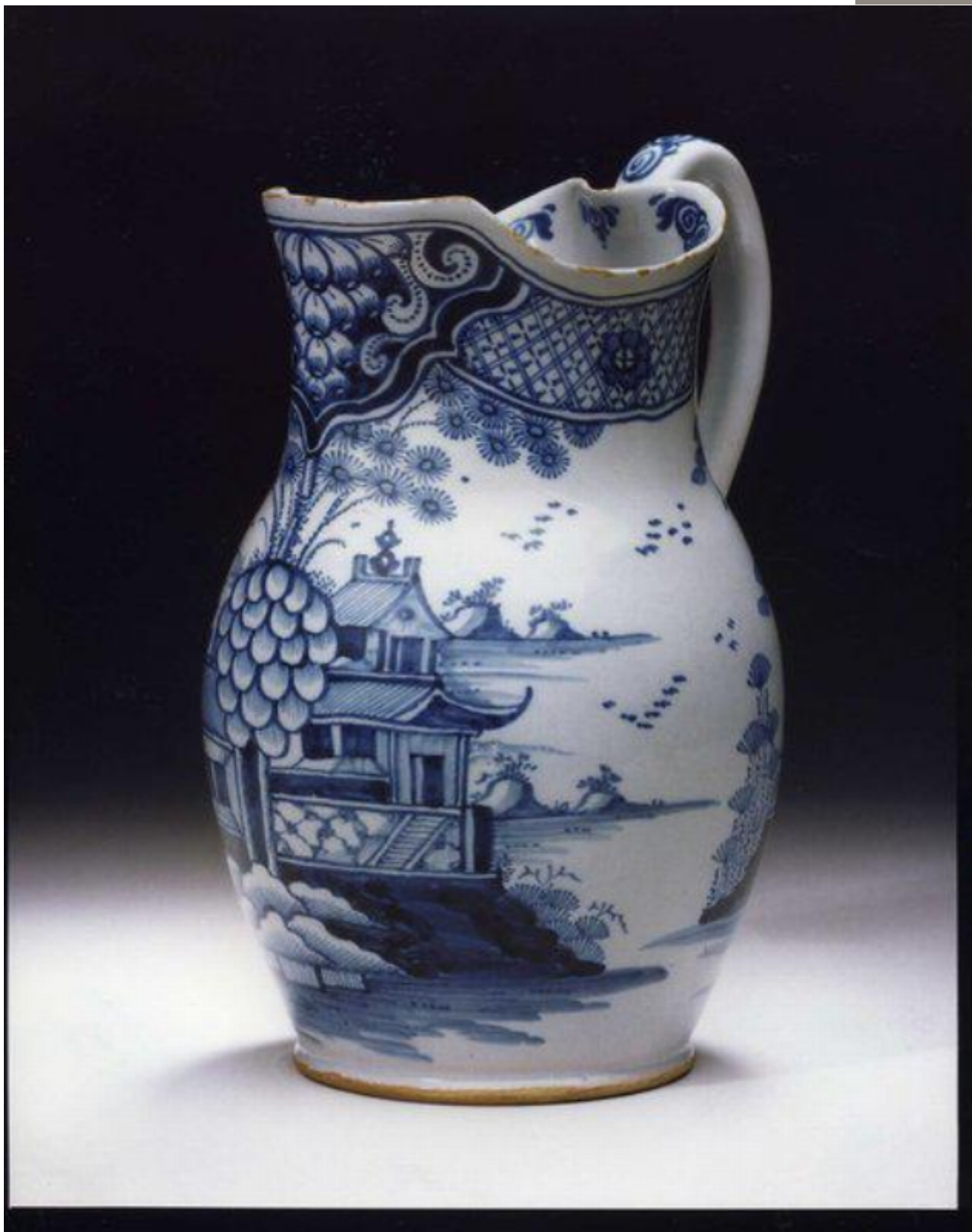


A rare, mid-18th century, English delftware jug

Sold



Description

The outer rim with trellis diaper reserves with flowerheads, and a cartouche decorated with a bunch of grapes interposed at spout and handle. The inner rim with a stylised scroll motif. The body with a house on a terrace, with a large bunch of grapes growing from a tree in the foreground. The back with houses on terracing, with a willow tree in the foreground. Decorated in blue on a pale blue glaze. Restoration to rim and lower body. Probably London, last quarter of the 18th century.